

Wyoming County Soil & Water Conservation District 2011 Annual Report

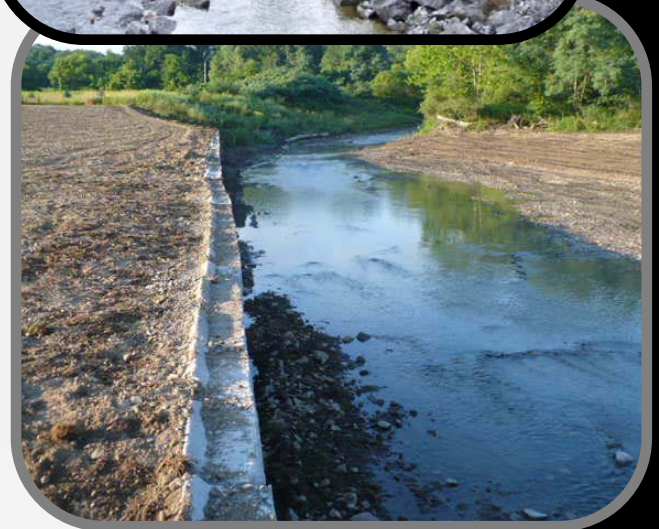


The mission of the Wyoming County Soil and Water Conservation District is to promote wise management of our natural resources through a wide variety of quality conservation and educational programs.

Wyoming County SWCD provides technical assistance on soil, water, and related natural resources to municipalities, farmers, and landowners who utilize the information to make sustainable land use decisions and protect water resources. The Wyoming County SWCD works with many stakeholders to secure cost share funding which is used to complete Best Management Practices on farms, water quality improvement projects, and stream channel restoration.



Cattaraugus Creek
Streambank Stabilization
in the Town of Arcade



Oatka Creek Streambank Stabilization in the Town of Warsaw

2011 Agricultural NPS Projects in Wyoming County

Merle Heifers, LLC
Silage Leachate System &
Barnyard Runoff

Sregnuoy Farms, LLC
Silage Leachate Mgt. System

Maple Grove Dairy,
Heavy use Area Protection

Bliss Cattle Company
Silage Leachate Mgt. System

Secondary Farm, LLC
Silage Leachate Mgt. System

Fugle Farm,
Silage Leachate Mgt. System

Maple Ridge Farm,
Silage Leachate Mgt. System

Wyoming County SWCD 2011 Accomplishments

Total Requests for Assistance – 216

Municipal (Towns, Villages, etc.) Assisted - 36

Ag Value Assessment -125

Hydroseeding/Critical Area Seeding - 8.25 acres

Tree Seedlings sold by District – 10,653

Conservation Practices Applied – 15

Ag Waste Storage Systems Installed -1

Ag Waste Transfer Systems Installed -6

Conservation Drainage Systems – 9,755 Ft.

Mining Plan Assistance – 27.6 acres

Vegetated Treatment Areas Installed -6

Stream Sites Reviewed-19

General Stream Permit Assistance – 4

NYS DEC Stream Permit Assistance – 4

Streambank Protection/Stabilization – 1100 Ft.

Stream Clearing/Snagging – 390 Ft.

Stream Habitat Improvement – 13 Acres

Cover Cropping – 37.8 Acres

Silage Leachate Management System – 6



**Top Left: Livestock stream crossing under construction at Seewaldt Bros, Top Right: Completed access road culvert at Seewaldt Bros.
Bottom Left: Ag Bag storage area at Richard Pilc Farm - before, Bottom Right: Ag Bag Storage at Pilc Farm after Construction.**

Partners in Conservation Award



Wyoming County Soil & Water Conservation District was pleased to present a new award this year at the Annual Awards Banquet on November, 16th at the Byrnclyff Conference Center in Varysburg. The purpose of this award is to recognize conservation partners of the Soil & Water Conservation District as well as to honor our former Director and Chairman, Mr. Ronald Herman, a past Supervisor from the Town of Wethersfield, who served on the District Board for over 23 years.



Left to Right: Trout Unlimited Stream Projects Chairman - Chuck Godfrey
Wyoming County SWCD District Manager - Greg McKurth
Western NY Trout Unlimited President - Gary Coons

The inaugural Ronald P. Herman, Sr. Partners in Conservation Award was presented to the Western New York Chapter of Trout Unlimited for outstanding achievement in the protection and restoration of trout streams in Wyoming County. For over 40 years, Trout Unlimited has worked closely with the District, NYSDEC Bureau of Fisheries, U.S. Fish & Wildlife Service and many other groups, organizations and municipalities to maintain and enhance the fisheries resources in the Wiscoy, East Koy, Cattaraugus and Oatka Creeks in Wyoming County and throughout Western New York.

North Branch Trout Habitat Revitalization Project



Wyoming County SWCD Education Sponsors

- ◆ The Bank of Castile
- ◆ Tompkins Trust Insurance Agency
- ◆ Farm Credit East
- ◆ Kent Inc.
- ◆ RMS Technologies, LLC
- ◆ E.J. Freyburger & Sons Earth Moving
- ◆ Donald G. Butler Construction, Inc.
- ◆ D & H Excavating, Inc.
- ◆ Erosion Technologies & Control Inc.
- ◆ Frontier Concrete, Inc.
- ◆ E. R. Rule & Sons Excavating, Inc.
- ◆ RL Jeffres & Sons, Inc.
- ◆ Gillen & Wellman Land Surveyors
- ◆ Pavilion Drainage Supply Co, Inc.
- ◆ Ken's Tree Service
- ◆ R. W. Taylor Trucking & Excavating, LLC
- ◆ L. B. Tiling, Inc.
- ◆ E & M Engineers & Surveyors, PC
- ◆ Tri-County Stump Removal Tree Service
- ◆ Java Excavating
- ◆ Zehler Excavating
- ◆ D. Smith & Son Excavating, LLC
- ◆ James Cheeseman
- ◆ Byrnclyff Resort & Conference Center
- ◆ Woodstream Campsite Inc.
- ◆ Morton Salt
- ◆ Wyo. County Veterans Inc.
- ◆ Wyo. County Conservation Association
- ◆ Dairy Marketing Services

Trailside Envirothon Competition at Letchworth State Park



Special Education Projects

Each year, the Wyoming County Soil & Water Conservation District coordinates or participates in several educational workshops and events to promote conservation education and environmental stewardship.

- Wyoming County SWCD Tree and Shrub Sale
- Tree Talk and Seedling Handout at Perry Elementary School
- 6th Grade Science Class Natural Resource Talk
- Boys Scout Troop Environment Talk
- Beaver Meadow Earth Day Event
- Wyoming County Shooting Sports Water Cycle Talk
- Regional Trailside Envirothon Competition
- Wyoming County Agri-Palooza
- Annual Water Quality Tour
- Wyoming County Pike Fair
- NYS DEC Learn to Fish Day at Letchworth State Park
- Quarterly Newsletter



Left Picture:
2011 Envirothon
Winners, Perry
High School



Right Picture:
2011 Conserva-
tion Farm of the
Year, Bliss Cattle
Co., Bliss NY

Visit www.wcsxcd.org for a full listing of District programs and services

Wyoming County SWCD
31 Duncan St.
Warsaw, NY 14569

NON-PROFIT
ORGANIZATION
U.S. POSTAGE PAID
WARSAW, NY 14569
PERMIT NO. 64