



# Wyoming County Soil & Water Conservation District 2010 Annual Report

*Conservation Doesn't Cost, It pays!*

## Board of Directors

**Daryl Heiby,**  
Chairman  
At-Large Member

**Joseph Gozelski,**  
County Supervisor

**Sally Meeder,**  
County Supervisor

**Walt Faryna,**  
Farm Bureau  
Representative

**Richard Youngers,**  
Grange  
Representative

## District Staff

**Gregory McKurth,**  
District Manager

**Sharon Boyd,**  
Secretary/Treasurer

**Bethany Bzduch,**  
Water Quality  
Technician

**Timothy Terry,**  
Engineering  
Technician

**Nancy Herman,**  
Conservation Aide

**Justin Schoff,**  
Conservation  
Technician Intern

## NRCS Staff

**Mia Halter,**  
District Conservationist

**Mike Shaw,**  
Soil Conservation  
Technician



## District Statement

**T**he mission of the Wyoming County Soil and Water Conservation District is to promote wise management of our natural resources through a wide variety of quality conservation and educational programs. Wyoming County SWCD provides technical assistance on soil, water, and related natural resources to municipalities, farmers, and landowners who utilize the information to make sustainable land use decisions and protect water resources. The Wyoming County SWCD works with many stakeholders to secure cost share funding which is used to complete Best Management Practices on farms, water quality improvement projects, and stream channel restoration.

*Celebrating  
70 Years  
of Serving  
Wyoming County*

Top: Pond site review in Perry, NY  
Middle: Tonawanda Creek bank stabilization in Attica, NY  
Bottom: Streambank stabilization on a tributary of the Tonawanda Creek in the Village of Attica, NY

## 2010 Agriculture Construction Season

- \$667,171 NYS Ag & Markets NPS Ag Grant Funds
- \$612,338 Land Owner Funds
- \$1,279,509 Total dollars spent in Wyoming County affecting 24 local businesses

## 2010 Completed Agricultural Projects in Wyoming County

Co-Vista Holsteins, Arcade - Ag Waste Storage

Nickerson Bros., Arcade - Ag Waste Storage

Andy Kibler, North Java - Heavy Use Protection Area

Bliss Cattle Co., Eagle - Ag Waste Transfer

Walt McCormick, North Java - Silage Leachate System

West Flats, Varysburg - Silage Leachate System

Friendly Acres, Attica - Silage Leachate System

## Joint County Projects

CJ Farm, Cattaraugus County - Ag Waste Certification

Nichols Farm, Cattaraugus County - Ag Waste Storage

Telaak Farm, Cattaraugus County - Ag Waste Storage

Dan McCormick, Genesee County - Ag Waste Storage



## Wyoming County SWCD 2010 Accomplishments

|   |           |                                     |             |
|---|-----------|-------------------------------------|-------------|
| Total Requests for Assistance                   | 267       | Strip Cropping                      | 85 Acres    |
| Municipal (Towns, Villages, etc) Units Assisted | 71        | Dry Hydrants Installed              | 2           |
| Ag Value Assessments                            | 98        | Conservation Drainage Systems       | 13,150 Feet |
| Hydroseeding/Critical Area Seeding              | 7.1 Acres | Mining Plan Assistance              | 2           |
| Trees Sold by District                          | 12,100    | Vegetated Treatment Areas Installed | 3           |
| Ag Waste Storage Systems Installed              | 3         | Stream Sites Reviewed               | 30          |
| Ag Waste Transfer Systems Installed             | 1         | Stream Permit Assistance            | 2           |
| Silage Leachate Collection Systems Installed    | 3         | Streambank Protection/Stabilization | 875 Feet    |



## Local Businesses Benefit-

During each round of funding a large number of local businesses are contracted to complete each project. Below is a list of all local businesses affected throughout the course of one round (Tonawanda Creek Watershed Ag BMP Implementation) of grant funding.

**S.J.F. Construction, Inc.**

**Elam Materials, Inc.**

**Ortel Supply, Inc.**

**Oswego Tool & Steel**

**Edelrock Gravel Products**

**RMS Technologies, LLC**

**Daniel Kelley Construction**

**Jay E. Potter Lumber Co., Inc.**

**Attica Sand & Gravel**

**Dan Dills Excavating, Inc.**

**A. D. Call & Sons**

**Jess Engineering, PLLC**

**Cobbie Hill Contracting, LLC.**

**Ed Hulme, Inc.**

**Java Excavating, Inc.**

**Lester Roberts Construction, Inc.**

**D. Smith & Son Excavating, LLC.**

**J. Merle Excavating**

**R & R Precision Construction, LLC.**

**R & R Fencing, LLC.**

**3<sup>rd</sup> Rock, LLC.**

**Bernard Schmieder, PE/LS**

**Wellman Service, LLC.**

**Larry A. Westfall**

**Kistner Concrete Products, Inc.**

**Tractor Supply Co.**

**Strykersville Plum., Heat, & Elect.**

**Five Corners Repair, Inc.**

**King's AgriSeed**

**Zehler Excavating, LLC.**

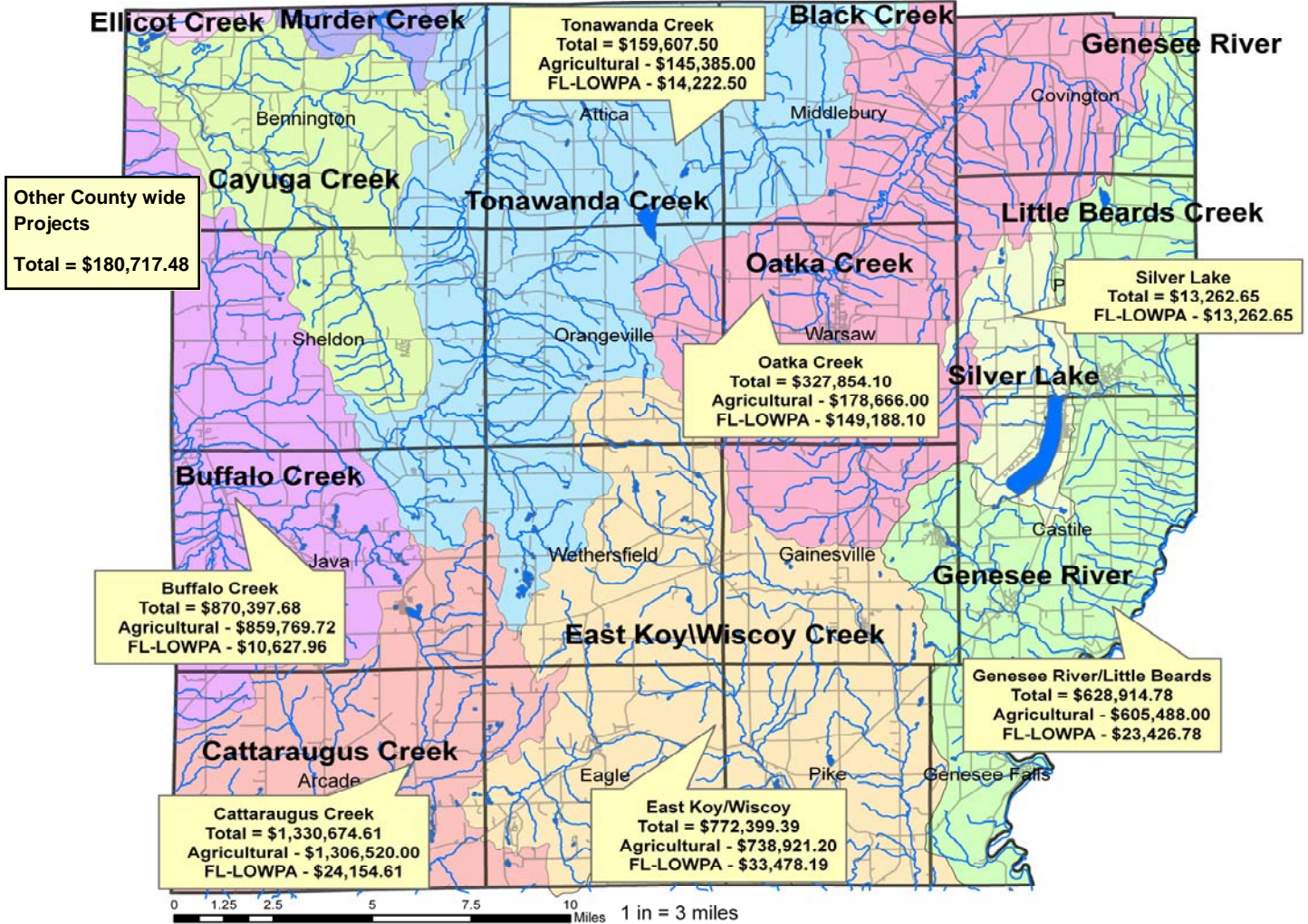
**King Brothers Contractors, Inc.**

Above Left: Co-Vista Holsteins, Construction of Ag Waste Storage, Above Right: Nickerson Bros, Construction of Earthen Manure Storage, Bottom Left: Walt McCormick, Silage Leachate System Construction

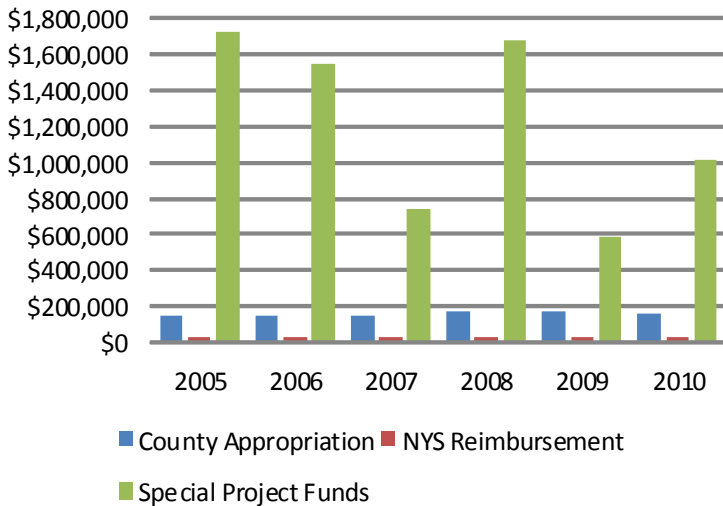


# Grant Funds awarded to Wyoming County = \$4,567,181.07

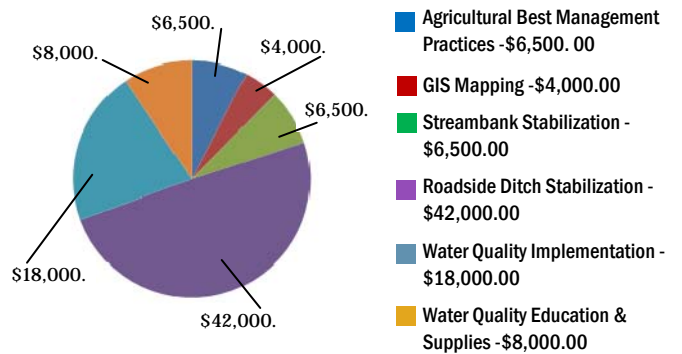
Map represents dollars spent on Ag BMP's, Streambank Stabilization, and Roadside Stabilization Projects from 2005-2010 by watershed



## Wyoming County SWCD Funding Sources



## Finger Lake-Lake Ontario Watershed Protection Alliance 2009-2010 Funding for Wyoming County = \$85,000.00



Left: A new 2010 Finn T-90 hydroseeder was purchased with funding from the New York State DEC to the Finger Lakes - Lake Ontario Watershed Protection Alliance.

Right: BF-300 Ag Plastics Baler leased by the NYS Dept. of Environmental Conservation to the Wyo. County SWCD.

## Wyoming County SWCD Advertising Sponsors

- ◆ Kent Inc.
- ◆ RMS Technologies, LLC
- ◆ Site Development Excavation
- ◆ Dan Dill's Excavating
- ◆ WYCO Excavating & Septic Services
- ◆ New England Tank, Inc. Statewide Aqua Store, Inc.
- ◆ E.J. Freyburger & Sons Earth Moving
- ◆ Donald G. Butler Construction, Inc.
- ◆ D & H Excavating, Inc.
- ◆ Erosion Technologies & Control Inc.
- ◆ Frontier Concrete, Inc.
- ◆ E. R. Rule & Sons Excavating, Inc.
- ◆ RL Jeffres & Sons, Inc.
- ◆ Eastwood Industries, Inc.
- ◆ Gillen & Wellman Land Surveyors
- ◆ Pavilion Drainage Supply Co, Inc.
- ◆ Ken's Tree Service
- ◆ R. W. Taylor Trucking and Excavating, LLC
- ◆ JESS Engineering, PLLC
- ◆ Land Improvement Contractors of America L. B. Tiling, Inc.
- ◆ Ed Hulme, Inc.
- ◆ SJF Construction, Inc.
- ◆ E & M Engineers & Surveyors, PC
- ◆ Tri-County Stump Removal Tree Service



**Above Right: New 2010 T-90 Hydroseeder seeding a critical area in the Town of Bennington, NY.**  
**Above Left: Wyoming County Envirothon Champions - Warsaw High School.**

## Special Education Projects

Each year, the Wyoming County Soil & Water Conservation District coordinates or participates in several educational workshops and events to promote conservation education and environmental stewardship.

- Wyoming County SWCD Tree and Shrub Sale
- Beaver Meadow Earth Day Event
- Wyoming County Conservation Club Invasive Species Talk
- Regional Trailside Envirothon Competition
- Wyoming County Dairy Fest
- Annual Water Quality Tour
- Wyoming County Pike Fair
- Representing the NYS Soil and Water Conservation Committee at NYS Fair
- Quarterly Newsletters

## Wyoming County SWCD Community Involvement

Wyoming County SWCD is currently involved with many committees around the county in order to provide a better service to all stakeholders.

- ◆ Oatka Creek Watershed Committee
- ◆ Oatka Creek/Black Creek Watershed Management Planning Committee
- ◆ Silver Lake Watershed Commission
- ◆ Silver Lake Watershed Planning Committee
- ◆ Tonawanda Creek Watershed Committee
- ◆ Java Lake Water Quality Committee
- ◆ Wyoming County Marcellus Shale
- ◆ Wyoming County Chamber of Commerce Committee
- ◆ Wyoming County Farmland Protection Board
- ◆ Wyoming County Board of Supervisors Ag Committee
- ◆ NYCDEA Water Quality Symposium Planning Committee
- ◆ Seneca Trail RC & D Council
- ◆ Erie-Wyoming County Joint Board
- ◆ Buffalo/Niagara Riverkeeper Watershed Management Planning Committee
- ◆ Wyoming County WRCC/ RC & D Committee
- ◆ NYS Federation of RC & D's
- ◆ Wyoming County Agricultural Plastic Recycling Committee
- ◆ Wyoming County Planning Board
- ◆ FL/LOWPA Full Board
- ◆ NYS Association of Counties
- ◆ Genesee River Wilds Committee

Visit [www.wcswd.org](http://www.wcswd.org) for a full listing of District programs and services!

Wyoming County SWCD  
31 Duncan St.  
Warsaw, NY 14569

NON-PROFIT  
ORGANIZATION  
U.S. POSTAGE PAID  
WARSAW, NY 14569  
PERMIT NO. 64

*"Never doubt that a small group of thoughtful, committed citizens can change the world. Indeed, it's the only thing that ever has."*

*- Margaret Mead*