



Wyoming County Soil and Water Conservation District

Conservation Doesn't Cost, It Pays!

BOARD OF DIRECTORS

Daryl Heiby

Chairman

At Large Member

James Brick

Town of Perry Supervisor

John Knab

Town of Sheldon Supervisor

Walt Faryna

Farm Bureau Representative

Joseph Gozelski

Grange Representative

DISTRICT STAFF

Greg McKurth

District Manager

Sharon Boyd

Secretary/Treasurer

Allen Fagan

Conservation Technician

Kimberly Falbo

Conservation Technician

NRCS

Mia Halter

District Conservationist

Mike Shaw

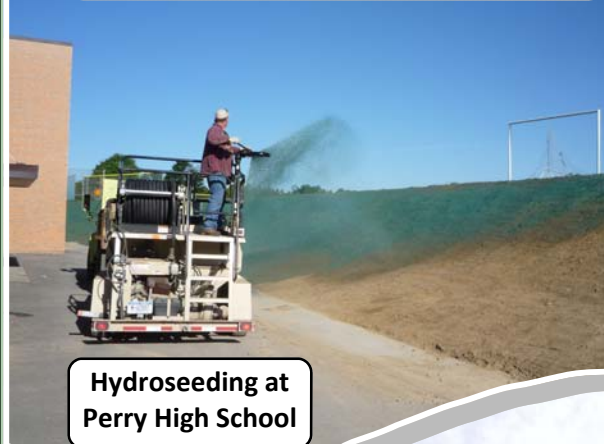
Soil Conservationist



SWCD Building
at Wyo. Co. Fair



Trailside Envirothon



Hydroseeding at
Perry High School

2013 Annual Report

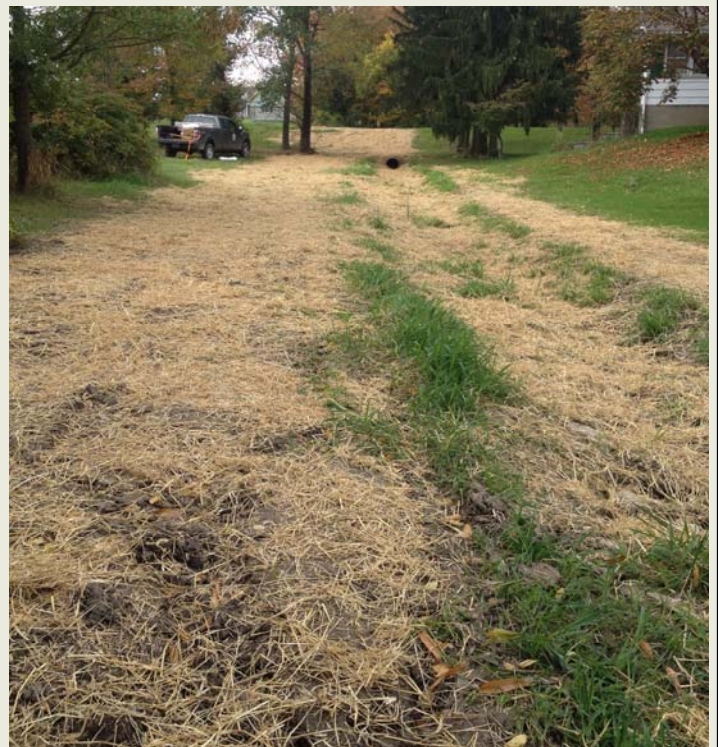


Stabilized Waterway at Jeffres Farm

2013 ACCOMPLISHMENTS

ROADS, STREAMS, FARMS
AND MUCH MORE ...

Total Requests for Assistance	254
Units of Government Assisted	41
Ag Value Assessments	133
Ag Waste Storages	4
Ag Waste Transfer Systems	3
Ag Waste Impoundments Closed	1
Conservation Tillage	335 ac.
Cover Cropping	1,983.3 ac.
Critical Area Seeding	16.6 ac.
Culvert Site Reviews	8
Diversion Ditches	1,450 ft.
Lined Waterways	1,333 ft.
Grass Waterways	2,390 ft.
Grazing Management	337 ac.
Heavy Use Area Protection	2
Permit Assistance	4
Pond Site Reviews	12
Silage Leachate Management Systems	3
Stream Site Reviews	28
Streambank Protection	170 ft.
Stream Channel Clearing	1,550 ft.
Subsurface Drainage	3,370 ft.
Underground Outlet	4,220 ft.
Vegetated Treatment Areas	2
Water & Sediment Control Basins	9



Top far right: Wiscoy Creek stabilization at Springdale Farm;
Middle far right: Pond at Emerlings Farm;
Bottom far right: Drainage project at Jellison's property;
Right: Log jam on Tonawanda Creek
Above: WASCOB at Table Rock Farms

Creek Stabilization Project on Crow Creek at Dunbar Road
Town of Attica

Before



After



Club Road Ditch Stabilization Project
Town of Castile

Eroding ditch



Construction



Completed project prior to seeding

AGRICULTURAL MANAGEMENT PROTECTS OUR RESOURCES

Wyoming County SWCD works with farms on projects that help stabilize the soil and keep our water resources clean. Below are just a few examples of agricultural best management practices completed.

Cover Crops

Cover cropping is when a producer plants small grains, grasses or legumes to prevent erosion and improve soil health. The photo to the right shows cover crops at Harkins Farms. Over 1900 acres were planted with cover crops in 2013.



Protected Waterways

Many waterways are prone to erosion. To stop this, the waterways can be lined with stone, as shown at Jeffres Farm to the left. Waterways can also be protected with a special fabric and vegetated, as shown on the next page at Sregnuoy Farms. Over 3500 feet of waterways were lined or grassed in 2013.

Agricultural Waste Storage

Waste storage protects water resources by allowing producers to spread manure when nutrients will be used by plants and after bacteria has died off. Waste storage systems can be earthen, concrete or steel. The concrete storage to the right is on Bowhill Farms. Four agricultural waste storage systems were built in 2013.



Silage Leachate Management

Silage leachate is high in nutrients and can cause eutrophication. The management system to the left is at Bowhill Farms. Three systems were built in 2013.



Vegetated Treatment Areas

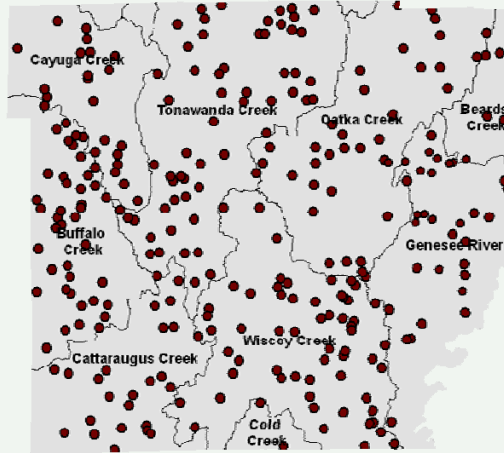
Vegetated treatment areas, also known as VTAs, filter sediment and nutrients out of water. They are often used in conjunction with other agricultural best management practices. The photo to the right shows a level lip spreader at the top of a VTA at Broughton Diversified Farms. Two VTAs were built in 2013.



2013

ACCOMPLISHMENTS

- 6 Tier 1 Questionnaires
- 4 Tier 2 Assessments
- 1 Tier 3A Plans Completed
- 5 Tier 4 BMP Implementation Projects
- 4 Tier 5B BMP Evaluations
- 20 Tier 5B Plan Evaluations



Approximately 355 farms throughout Wyoming County participate in the AEM program. Each dot on the map represents an AEM participant.

2013 Conservation Farm of the Year



2013 AEM AWARDS

- Woodvale Farms, 3133E#
- Broughton Diversified Farming, 6E6~B#0B1E+##
- Bowhill Farm, : Ê1æ 1LÆ#
- T.L. Hodnett Farms, 31B-Æ~ÓEPOO

Lined Waterway Project on Sregnuoy Farms

Erosion problems before



Lining waterway with geotextile fabric and hydroseeding



Completed project with growing vegetation



AGRICULTURAL PLASTICS RECYCLING

Wyoming County Soil and Water Conservation District collaborates with Cornell Cooperative Extension to bale and recycle agricultural plastics in Wyoming County. In 2013, 86 bales of agricultural plastics were prepared for recycling. This is equivalent to approximately 43 tons of plastic! These bales would normally go into the landfill but are instead shipped out of the county to a recycling plant.

*43 tons of plastic
were kept out of
landfills in 2013*



Maple Tubing Recycling New in 2013!

Wyoming County Soil and Water Conservation District is now accepting maple tubing for recycling as part of the Agricultural Plastics Recycling Program. In collaboration with Cornell Cooperative Extension, 3 1-ton totes of maple tubing have been prepared for recycling.



CONSERVATION PAYS!

Over \$1.7 million

were spent on the Lake Erie Agricultural Non-Point Source projects over 5 years!

LOCAL BUSINESSES AND THE ENVIRONMENT BENEFIT

Wyoming County Soil and Water helps secure grant funding for conservation projects. This money is then used to hire local contractors and buy supplies from local businesses. Wyoming County, along with their collaborators, recently finished a NYS Agricultural Non-Point Source Project for Lake Erie in the Cattaraugus, Buffalo and Tonawanda Creek watersheds in Cattaraugus, Erie, and Wyoming Counties. Project outcomes are summarized below.

ECONOMIC PROFILE

- 66 area businesses utilized
- \$895,848.32 in grant funding
- \$795,902.47 in landowner contributions
- **Over \$1.7 million invested in BMPs**

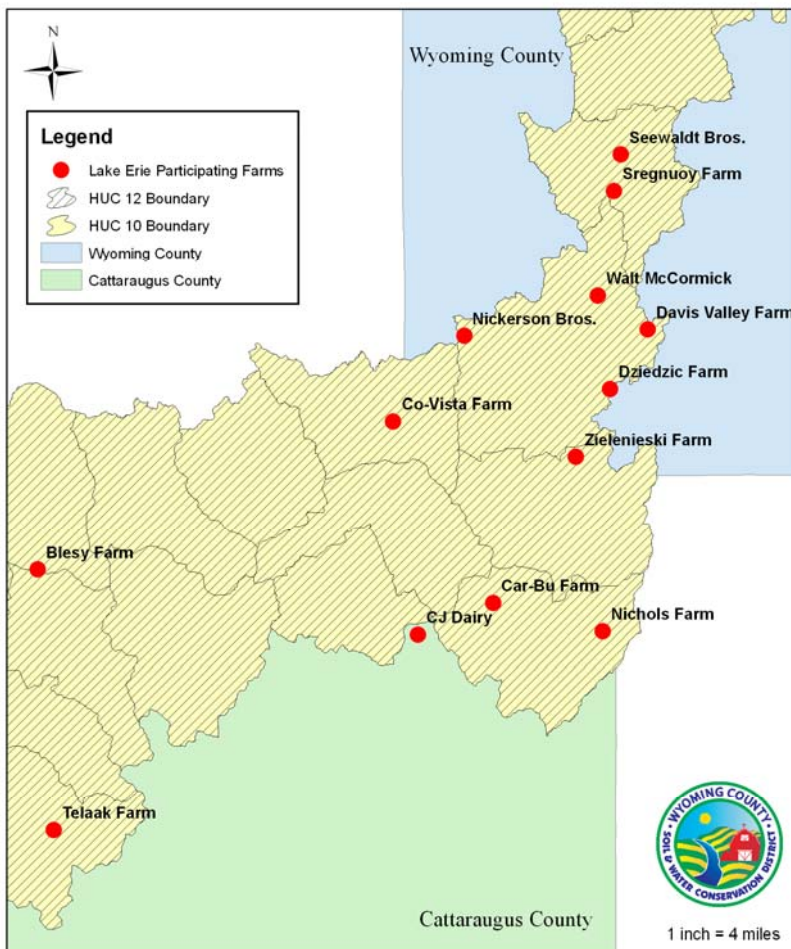
13 Farms Implemented 19 Best Management Practices (BMPs)

Agricultural Waste Storage Certifications	3
Agricultural Waste Storage Facilities Constructed	5
Agricultural Waste Transfer Systems Installed	2
Silage Leachate Management Systems Installed	8
Livestock Stream Crossing	1

Stabilized stream crossing at Co-Vista Holsteins



Construction of an agricultural waste storage system at Nickerson Brothers Farm.



Lake Erie Drainage Basin Ag BMP Implementation Project

0 2 4 8 12 16 Miles

Community Connections



Left: Tonawanda Creek Storm Drain Medallion Project
Below: Attica High School—Winners of the 2013 Trailside Envirothon



Wyoming County SWCD

Advertising Partners

Alleghany Farm Services LLC
D & H Excavating, Inc.
Donald G. Butler Construction, Inc.
E&M Engineers & Surveyors, PC
E.J. Freyburger & Sons Earth Moving
Gillen & Wellman
Java Excavating Inc.
Jeffres Ag Service, LLC
RMS Associates
Kens Tree Service
William Kent, Inc.
L.B. Tiling, Inc.
Pavilion Drainage Supply CO., Inc.
RW Taylor LLC
Tri-County Stump Removal Tree Service

WATERSHED PLANNING

Wyoming County SWCD has contributed to the development of watershed plans throughout the County and is an active member of community watershed groups.



THE OATKA CREEK WATERSHED COMMITTEE, INC.

SILVER LAKE
WATERSHED COMMISSION



Tonawanda Creek
WATERSHED COMMITTEE

To find out more information
on any of our services:

www.wcswcd.org
wcswcd@frontiernet.net
(585) 786-5070



Wyoming County SWCD

31 Duncan St.

Warsaw, NY 14569

**NON-PROFIT
ORGANIZATION
U.S. POSTAGE PAID
WARSAW, NY 14569
PERMIT NO. 64**