

# Wyoming County Soil & Water Conservation District



**2005 Annual Report**

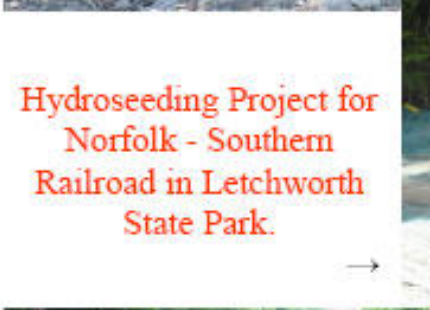


# Accomplishments 2005

Individuals Assisted	561
Groups & Organizations Assisted	39
Government Units Assisted	78
Ag Value Assessments	111
Trees sold by District	34,685
Tile Drainage Installed	8,605 ft.
Diversion Ditch Installed	3,000 ft.
AEM Tier 1 Completed	9
AEM Tier 2 Completed	11
Silage Leachate Systems	4
Nutrient Management Plans	5
Ag Waste Storage Facilities (planned)	4
Ag Waste Storage Facilities (installed)	3
Pond Site Reviews	9
Stream Channel Restoration & Stabilization	1,130 ft.
Stream Sites Reviewed	25
SWCD General Stream Permit	4
Hydroseeding	14.5 ac.
Dry Hydrants Installed	2
Mined Land Reclamation Plans	2 Plans/67.5 ac.
EQIP Contracts	20
Conservation Tillage Systems	1,656 ac.
Barnyard Runoff Management System	1
Conservation Security Program	16 Contracts



160 feet of Bank Stabilization completed on a small tributary of the Tonawanda Creek at Attica High School.



Hydroseeding Project for Norfolk - Southern Railroad in Letchworth State Park.



Storm Damage Town of Orangeville June 2005



Grade Control Sill at Pike Fairgrounds



Manure Storage expansion at Gardeau Crest Dairy Farm in the Town of Castile.

## Ag District Review

The Wyoming County Soil & Water Conservation District continued to review Agricultural District #1. This review is combining Ag District #1 & #6 into Ag District #1. Parcels have been reviewed to determine land use. A public information meeting was held to update landowners and provide personal input in the review process. The County Planning Board and the Farmland Protection Board made recommendations and reviewed these reports. With the Board of Supervisors approval this report will now be submitted to New York State Agriculture and Markets to be certified.

The District also conducted the 30-Day Open Enrollment signup, from December 1 to December 31. Landowners who were not previously in an Agricultural District could enroll in an established Ag District. Three parcels totaling 256.78 acres applied to be included in an Agricultural District.



Dan Pingrey's Manure Storage in the Town of Sheldon



Methane Digesters NYSERDA Grant to the Town of Perry.

Visit and see information about our programs, upcoming events, and news.  
[www.wcswcd.org](http://www.wcswcd.org)

# 2005 Highway Projects



Hydroseeding at Bacon Rd.



Town of Sheldon  
Storm Damage



Construction at Cornwell Rd.



New Culvert on Cornwell Rd.

- ◆ **Town of Attica**
  - ✓ Assisted in seeking funding for a road ditch stabilization project on Jillson Road.
  - ✓ Assisted in seeking funding for a culvert stabilization project on Exchange Street.
  - ✓ Provided assistance with road drainage and culvert replacement on Comet Road.
  - ✓ Investigated drainage concerns on Dunbar Road.
- ◆ **Town of Bennington**
  - ✓ Reviewed drainage concern and culvert evaluation on Kern Road.
- ◆ **Town of Castile**
  - ✓ Evaluated drainage concern and culvert size at Silver Grove and Luther Roads.
- ◆ **Town of Orangeville**
  - ✓ Assessment of storm damages on Buffalo, Gassman and Syler Roads.
- ◆ **Town of Perry**
  - ✓ Completed stream permit applications for culvert replacement projects.
  - ✓ Completed a culvert re-construction project and hydroseeding on Bacon Road.
  - ✓ Completed a culvert re-construction project and hydroseeding on Cornwell Road.
- ◆ **Town of Sheldon**
  - ✓ Assessment of storm damages to Centerline, Humphrey and Maxon Roads.
  - ✓ Completed hydroseeding on road ditches along Centerline Road.
- ◆ **NYS DOT**
  - ✓ Assisted with drainage concerns on Route 238 near the Wyoming Correctional Facility Farm.
  - ✓ Assess storm damage to culvert on Route 98 in the Town of Sheldon.
  - ✓ Assess several storm damaged culverts in Route 77 in the Town of Java.
  - ✓ Provided assistance with runoff control and hydroseeding at new salt storage facility in Java.
  - ✓ Completed hydroseeding on road ditches on Route 20A in the Town of Perry.
  - ✓ Completed hydroseeding on road ditches on Route 63 in the Town of Covington.
  - ✓ Completed hydroseeding on road ditches on Route 19A in the Towns of Castile & Genesee Falls.
  - ✓ Completed hydroseeding on road ditches on Route 19 in the Towns of Gainesville & Pike.
  - ✓ Completed hydroseeding on road ditches on Route 39 in the Towns of Castile & Pike.
- ◆ **Wyoming County Highway Dept.**
  - ✓ Evaluation of flooding concerns along French Road in the Towns of Bennington & Sheldon.
  - ✓ Completed hydroseeding at bridge construction site on Sheehe Road in the Town of Java.
  - ✓ Completed hydroseeding at bridge construction site on Bartz Road in the Town of Sheldon.
  - ✓ Completed hydroseeding at bridge construction site on Gerry Road in the Town of Eagle.
  - ✓ Completed hydroseeding on road ditches on Lamont Road in the Town of Pike.
- ◆ **Wyoming Hills Association**
  - ✓ Completed an updated maintenance plan for private roadways.

## NRCS Highlights

*By Brian Timothy, District Conservationist*

### Environmental Quality Incentives Program (EQIP) Signup -

Wyoming County had twenty two producers apply for EQIP Funding in 2005. Twenty of these applications were approved as contracts worth \$826,402 in funding on 18,555 acres. Practices that were included for financial assistance are Waste Storage Facilities, Manure Transfer Systems, Silage Leachate Collection and Filter Systems, Residue Management Systems (No-Till and Reduced Till.), Pest Management, Nutrient Management and Winter Cover Crops. Producers with these contracts have agreed to implement these practices over the next 4 to 5 years in order to improve soil, water, air and habitat quality.

### Conservation Security Program (CSP) Signup -

Seventeen CSP applications were submitted in the two eligible watersheds in Wyoming County in 2005. Sixteen applications were subsequently approved for funding as contracts worth \$1,478,808 on 9,707 acres in Buffalo/Eighteen mile and Niagara Watersheds in North Western Wyoming County. Landowners with these contracts will receive stewardship payments over the next 8-10 years for maintaining and enhancing natural resources.

### **Reminder**

- Keep your eyes and ears open for 2007 Program announcements next Fall.  
This may include EQIP, CSP, WRP, WHIP and AMA.

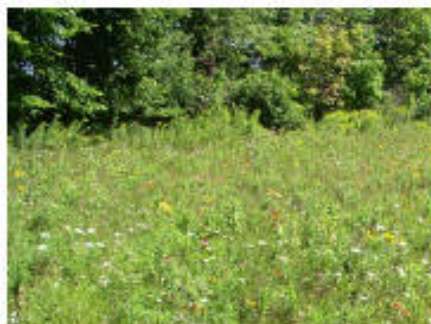
# Special Projects



This pothole was constructed in a non-agricultural wetland at Letchworth Central School in 2002. Potholes and level ditches are constructed through the Wetlands Reserve Program with irregular shapes, islands & peninsulas with water depths 3.5 ft. or less to provide aquatic habitat for water fowl, amphibians and various insects, etc.



This combination pothole/level ditch was constructed on Richard McMurray's WRP Permanent Easement in 2001. Note the lush aquatic habitat that has developed naturally over the past 4 yrs.



Richard McMurray planted this WHIP field to a mixture of native vegetation, including wildflowers in 2003. Several species of songbirds, upland game birds and mammals benefit from open grasslands, especially when they are mowed once every 3 years after August 1st.



The silage leachate high flow strip was installed on Silver Haven's Farm through the 1997 EQIP. Note the 3 different sized screen openings that were installed to keep solids from entering the stone trench. The low flow collector pipe inlet allows the highly concentrated liquid to go to a collection tank for land application.



Edelweiss Farms (John Borer) installed this silage leachate collection and disposal system through EQIP in 2005. A portable pump is set up in the low flow collection tank to transfer the liquid to a spreader for land application as needed.



This earthen manure storage pond expansion was completed through EQIP on Gardeau Crest Farms (Swyers Family) in 2005 to accommodate an expanded dairy herd. Note the fence along with safety warning signs which were installed around the manure pond.



True Farms installed this barnyard water runoff collection tank through EQIP 2005. The liquid waste water can be pumped to their earthen manure storage pond or pumped into a spreader for land application.

- ◆ Developed an Agricultural Environmental Management (AEM) Strategic Plan for Wyoming County in 2005.
- ◆ The Upper Buffalo River Watershed Agricultural Implementation Project (Phase III) in cooperation with the Erie County SWCD continued progress during the past year.
- ◆ The East Koy/Wiscoy Creek Watershed Agricultural Inventory is an AEM planning grant for farms in this combined watershed that has continued this past year.
- ◆ The Oatka Creek Watershed AEM Tier IIIB Planning Project is a cooperative effort with Genesee and Monroe Counties to develop CNMP's on CAFO Farms has been completed.
- ◆ The Tonawanda Creek Watershed AEM Planning Project is another joint project with Erie and Genesee Counties that was completed this year.
- ◆ The Letchworth State Park Public Water Supply Protection Project was funded through the NYS Agricultural Nonpoint Source Pollution Abatement & Control Program this year.
- ◆ The Genesee River Agricultural BMP Implementation Project is another cooperative effort with Genesee and Monroe Counties that was approved for funding in 2005.
- ◆ The East Koy/Wiscoy Creek Watershed Agricultural BMP Implementation Project is a continuation project recently funded through the NYS Ag Nonpoint program.
- ◆ The District has taken the lead in the review of Agricultural Districts in Wyoming County. In 2005, the review of the combined Agricultural District #1 and #6 continued.
- ◆ Finger Lakes/Lake Ontario Watershed Protection Alliance (FL/LOWPA) is an on-going water quality management program that is administered by the District.
- ◆ The District continued assistance to NYSDEC with Stormwater Management Activities in Wyoming County during the past year.
- ◆ Continued assistance to the New York State Soil & Water Conservation Committee (NYSSWCC) to administer the Western New York Water Quality Specialist position.
- ◆ Entered into agreements with NYSSWCC and the NYS Environmental Facilities Corporation to hire two CNMP Specialists to assist CAFO Farms and CNMP Planners across the state.
- ◆ Continued to provide technical assistance to USDA NRCS with the planning and design of agricultural BMP's to be funded under the Environment Quality Incentives Program (EQIP).
- ◆ Completed a stream channel restoration project on the Monkey Run in the Town of Arcade in cooperation with the Great Lakes Commission and the Seneca Trail RC&D Council.
- ◆ Completed a stream channel restoration project at the Wyoming County Fairground in cooperation with NYSDEC Bureau of Fisheries and the WNY Chapter of Trout Unlimited.
- ◆ Participated in the development of a Farmland Protection Plan for Wyoming County.

# Educational Activities



Trailside Envirothon



Wyoming Co. Dairy Fest



RC&D Stream  
Restoration Tour



Water Quality Tour

- ◆ Stormwater Management/Erosion & Sediment Control Workshop
- ◆ Learn to Fish Day
- ◆ Wyoming County 4-H Tree & Shrub Program
- ◆ WNY Grazing Expo
- ◆ Trailside Envirothon
- ◆ New York State Envirothon
- ◆ Wyoming County Dairy Festival
- ◆ Annual Water Quality Tour & Picnic
- ◆ Wyoming County Fair
- ◆ Conservation Farm of the Year Award Dinner
- ◆ Wyo. Co. SWCD Website Development

## 2005 CONSERVATION FARM OF THE YEAR

This year's Conservation Farm of the Year was awarded to Plato Brook Farms, of Arcade, NY. Each year the Wyoming County Soil & Water Conservation District recognizes a farm which has excelled in conserving our soil and water resources by installing practices on their farm to prevent soil erosion and improve water quality.

Plato Brook Farms operates a large dairy farm on Curriers Rd. in the Town of Java. The farm has been in existence since 1888. Kent is the fifth generation since the founding. Russell farmed with his father from 1961-1967. He purchased the farm in 1968 and was the sole proprietor until 1993 when a new partnership was formed with Kent and Janet. Plato Brook Farms reorganized as an LLC in 1999 when the real estate was separated from the dairy operation and formed Springdale Lands, LLC, their land holding partnership.

The farm currently owns about 2300 acres. On that land 1400 acres of forages are grown. An additional 675 acres rented land is also cropped. Crops include 900 acres corn for silage, 600 acres alfalfa for silage, and 500 acres of grass for silage and hay. The herd totals about 2300 animals including 1220 cows and 1100 heifers. They employ an average of 20 people throughout the year.

Plato Brook Farms has always tried to use the land resources respectfully and are challenged to maintain the integrity of Plato Brook. Several conservation practices have been completed over the past years including: silage leachate system, barnyard runoff, strip cropping, drainage tile, diversion ditches, zone-till, conservation cropping sequence, limiting access to the Plato Brook and rotational grazing. With assistance from the Soil & Water District, Plato Brook Farms was successful in receiving funding through the 1999 New York State Non-Point Source Abatement and Control Program. Construction of a nutrient management system was completed. This system separates solids, composts and treats waste water through a wetland nutrient management system. A Nutrient Management Plan has been completed and the farm has filed the NOI for the CAFO permit.



Pictured, from left, are Dwight Hess, Janet Miller, Russ Miller, Kent Miller, Lisa Schiltz, Josh Carpenter and Chris Nickerson.

**Buffalo Creek, Inc.**



Site Development - Excavation - Gravel Products  
11800 Rt. 20A - Wales Center, New York 14169  
(716) 652-3768 Fax (716) 655-1141

**PAVILION DRAINAGE  
SUPPLY CO, INC.**

Your Corrugated Metal & Plastic  
Pipe Headquarters

Phillip Plossl, Pres.  
Pavilion, NY 14525  
(585) 584-3261

Would you like to  
advertise here?

Call  
(585) 786-5070

5 publications a year to  
over 2,000 recipients!



**GILLEN & WELLMAN**

LAND SURVEYORS-

7 Perry Avenue  
Warsaw, NY 14569  
585-786-3960

John F. Gillen, Proprietor  
SERVING WYOMING COUNTY FOR OVER 90 YEARS

POURED WALLS  
STRUCTURAL CONCRETE  
FOUNDATIONS

JOE COCORA  
DAVE MURPHY

**FRONTIER CONCRETE  
INC.**

P.O. BOX 65  
BOSTON, NY 14025

(716) 941-4780

**D & H  
EXCAVATING, INC.**

11938 Rt. 98 South  
Arcade, New York 14009

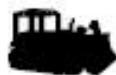
**ELDON KING**  
"Gift of Experience"

(716) 492-4956 Fax: 492-4951



- Basements
- Driveways
- Septics
- Ponds
- Trucking
- Gravel & Topsoil

**E.J. Freyburger & Sons  
Earth Moving**



Est. 1946  
4769 Whaley Rd.  
Java Village, NY 14083  
(585) 457-9975

Erwin, Kenny &  
Mike  
Representatives

**WILLIAM KENT, INC.**

Auctioneers, Real Estate Brokers, Appraisers  
Estates, Machinery, Farms, Livestock  
Real Estate at Auction or Private Treaty  
See our Website: [www.williamkentinc.com](http://www.williamkentinc.com)  
Box 58, Stafford, NY 14143 Ph. (585) 543-5449



**Engineers & Surveyors, P C**

[www.emengineers.com](http://www.emengineers.com)  
482 S. Cascade Drive  
PO Box 159  
Springville, NY 14141-1059



Dam Plans - Property Surveys  
Manure Storage Designs - Septic Systems  
(716) 592-2851 Toll Free (800) 339-5971

**Jeffres Ag Service, LLC**  
"Handling All Your Fertilizer, Seed,  
Inoculant & Application Needs"



6905 Ellicott St. Rd. 585-584-3036  
Pavilion, NY 14525

**EDWARD HULME, INC.**  
GENERAL CONTRACTOR

New Homes &  
Barns, Remodeling



Excavating, Tiling, Demolition, Gravel Products  
17 East Buffalo Street, Warsaw, New York 14569  
Phone: (585) 786-5880  
Fax: (585) 786-8169

**Agricultural Consulting  
Services, Inc.**

Toll Free: 877-310-1100  
Fax: 315-255-9266

Corporate Office:

1634 Monroe Avenue  
Rochester, NY 14618-9769

Donald G. Butler  
Construction, Inc.

Excavating \* Hauling \* Paving

\* Septic Systems

7429 Burke Hill Rd

Perry NY 14530

Phone: 585-237-3364

Land Improvement Contractors of America



**L.B. Tiling, Inc.**

Laser Controlled  
Drainage Systems  
Bulldozing

Ponds . Septic Systems . Locations

Lee Broadwell (716) 676-3663

E.R. Rule & Sons Excavating, Inc.

6 Bixby Hill Road  
Arcade, New York 14009  
Member of NYLICA



(585) 492-4090 - 492-2120 - Fax 492-4091  
Building - Ponds - Sewer Lines - Sand & Gravel - Coal  
Water Lines - Basements - Land Clearing - Fully Insured

**DISTRICT DIRECTORS**

Chairman, At-Large Member-Daryl Heiby  
County Supervisor - Joseph Gozelski  
County Supervisor - Sally Meeder  
Farm Bureau Representative - Walt Faryna  
Grange Representative - Richard Youngers

**DISTRICT STAFF**

District Manager - Gregory A. McKurth  
Secretary/Treasurer - Sharon Boyd  
Conservation Aide - Nancy Herman  
Water Quality Technician - David Reckahn  
Engineering Technician - Timothy Terry

**NATURAL RESOURCES**

**CONSERVATION SERVICE**

District Conservationist, Brian Timothy  
Area Soil Cons. Tech. - Dominic LaGioia  
Soil Cons. Tech. - Vacant